

Customer :

customer

Customer part :

customer part

Comment :

Comment

S1=2.36

S2=3.49

Tmax=459

Tp S2=498.0

PI=0.4

HI=119

Sample =1651.10

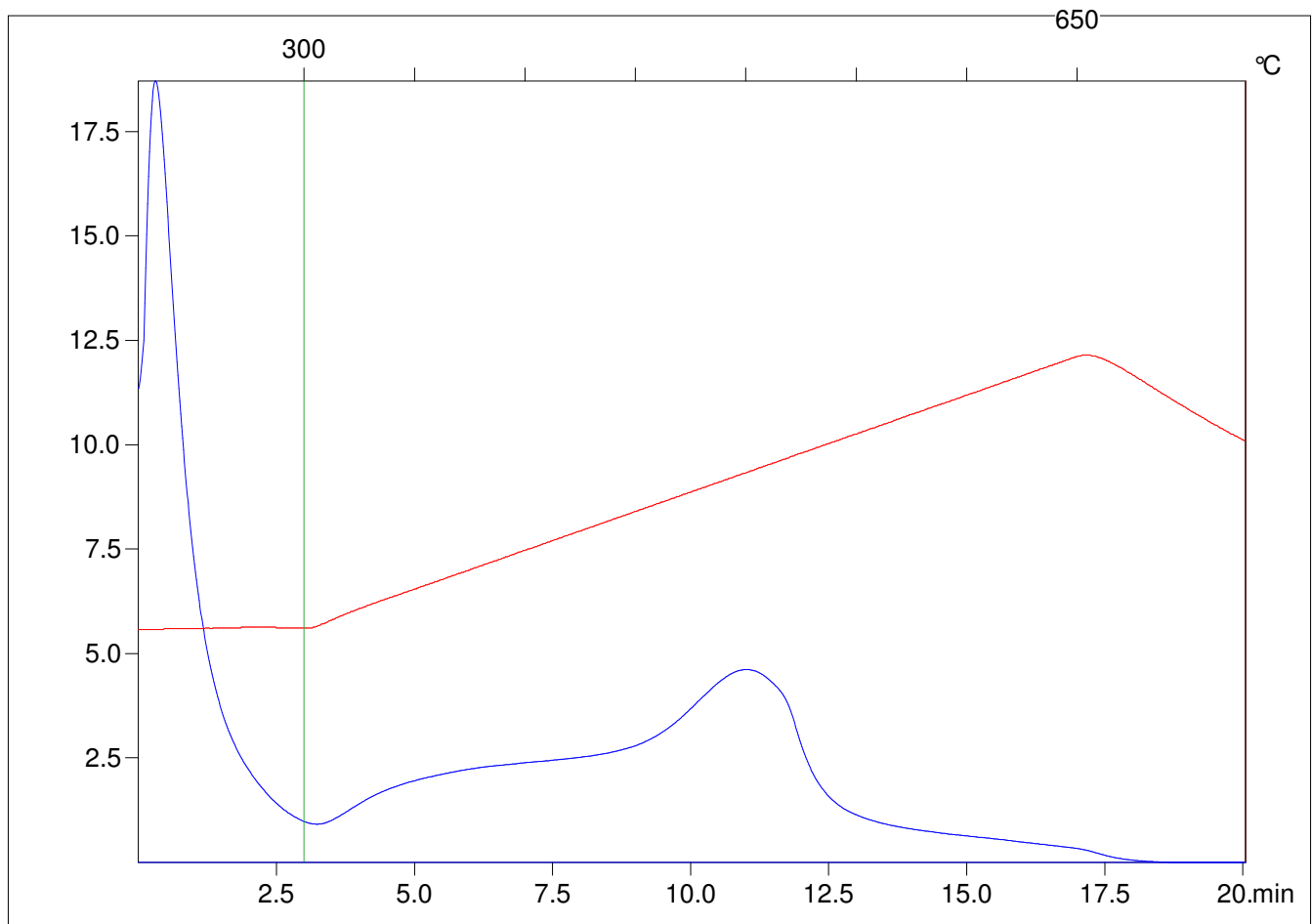
Method =Bulk Rock

Cycle=Basic

KFID(10*9)=1444

Qty =70.3

TOC=2.94



C:\VINCI\PK1792\PK066.R00 : FID pyrolysis graphic

State

Pyro Status

Oxi Status